

Prime Mover Control Solutions delivered across Europe and the Middle East

About Turner ECS

Turner ECS is an official Woodward Channel Partner with offices located in:

- The Netherlands
- The United Kingdom
- United Arab Emirates
- Italy
- Norway

About Bolier

As authorized marine dealer for MaK power systems Bolier – together with its subsidiary Moteurs Marine Méditerranée – is responsible for the sales and service in the Benelux, France and North Africa.



About Turner ECS

Woodward Channel Partner

Turner Engine Control Solutions (Turner ECS) is one of only five Woodward Channel Partners worldwide. We are a wholly owned subsidiary of the Turner Group, a privately owned and operated Scottish Engineering group; www.turner.co.uk

With our Headquarters in Hoofddorp, The Netherlands and facilities in United Kingdom and United Arab Emirates, Turner ECS offers a comprehensive range of products for the service, repair, and system upgrades of engine and turbine control and monitoring equipment.

About the UG-40DI Governor Upgrade

Solution

The Woodward UG-40-DI (Digital Interface) has all the features of the traditional UG-40 governor, but with a digital interface for remote speed setting, start fuel limiting and shutdown. Regrettably Woodward has now made this product obsolete.

Turner ECS in co-operation with Bolier has designed, tested and validated a solution for end users by modifying the UD-40DI governor, keeping the proven mechanical-hydraulic reliability of the UG-40D and the electronic reliability of the Woodward MAS driver box.

- E-box functionality and fuel limiter assembly is replaced by a modified UG-40 governor and a small cabinet
- The start fuel limiter assembly located in the UG-40DI governor is replaced with an on/off adjustable solenoid that provides the start limiter functionality

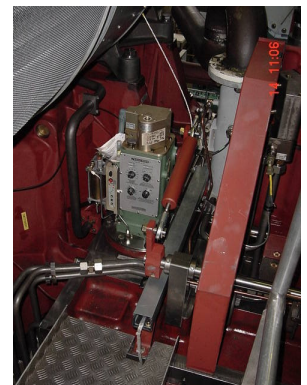
Functionality

- Adjustable start fuel limiter
- Alarm contact to limit speed setting
- Adjustable ramp rates for speed setting

Advantages

The upgrade to the UG-40DI will provide the following advantages to end users:

- Keep existing UG-40D governor
- Proven UG-40D governor parts
- No linkage adjustments
- No 2-2 alarm
- Existing fuel rack sensor remains in place
- Form and fit will remain identical
- Basic functionality remains the same
- Easy quick modification can be carried out onboard
- **Full Warranty**



'Providing Solutions for our Customers'